

Mamquam Mtn

RATING: Advanced

Location Key: C

TECHNICAL NOTES: Strenuous Day/ Overnight, Glacier Travel

MAP REFS.: 92G/15

SKI DISTANCE: ROAD <22 km

ROUTE: 6 km

TIME: ROAD ?

ROUTE: 4 hrs.

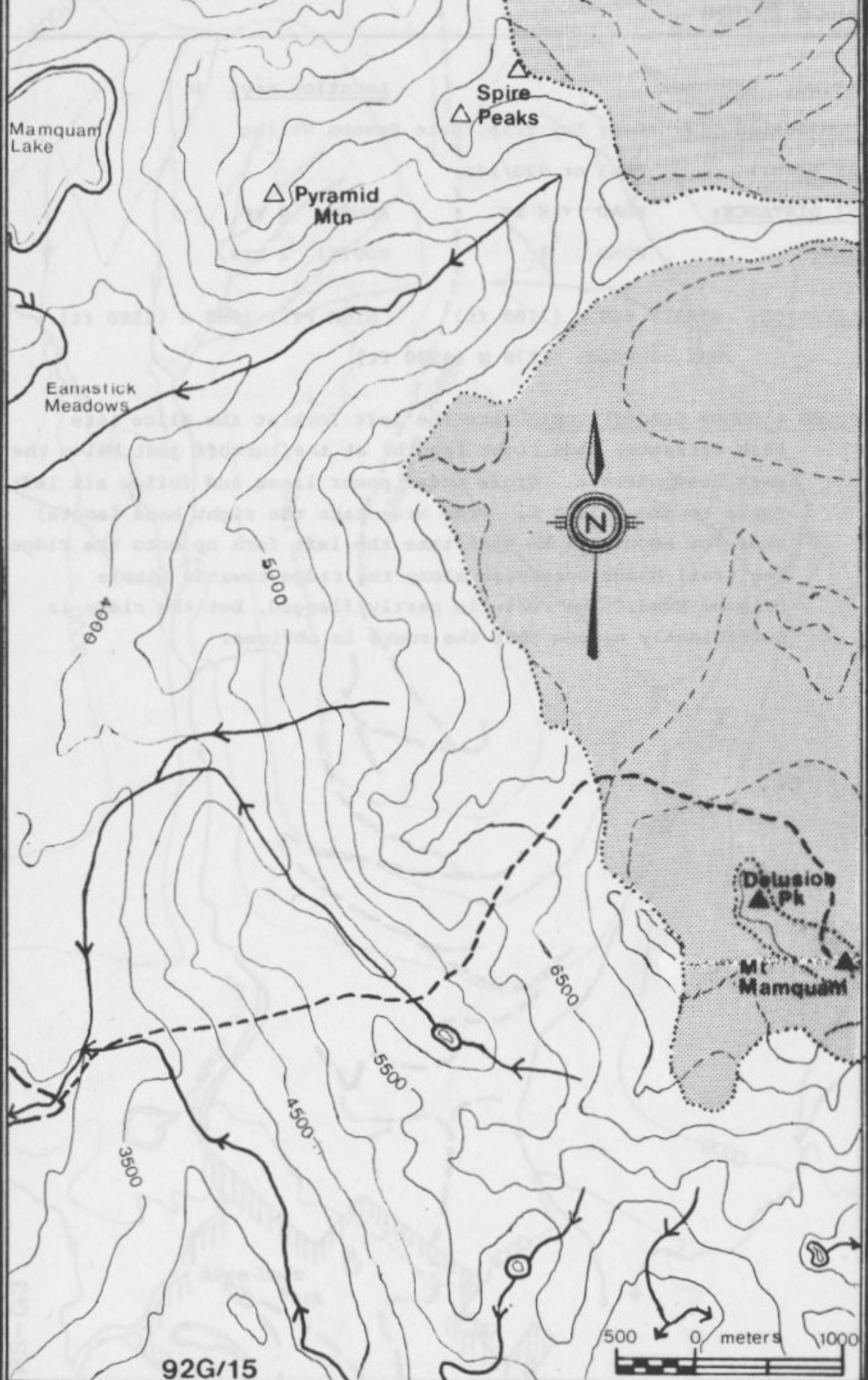
ELEVATION: START : 990 M (3250 ft) HIGH PT.: 2580 M (8450 ft)

ACCESS & ROUTE DESCRIPTION: Head off Mamquam road (0 km); left at Indian Arm spur 3.7 km; left fork 6.7 km; left fork 9.5 km; left fork over bridge (mile post 9) 12.7 km; right over bridge 12.9 km; left 13.2 km; sharp left 15.1 km; left (mile post 11) at 15.9 km; left 17.3 km; right just after pond 21.4 km; park near junction at 22.1 km, or by creek just beyond. This road is not plowed in the winter.

Cross the creek on a logging road bridge and head NE through the forest (staying on the left of the creek). Continue NE when the creek swings SE; and then up to a ridge (1680 M) above a minor lake east of Mamquam. Drop down to the lake and head up an obvious gully which exits at the edge of the icefield. Skirt Delusion Pk. (aptly named) to Mamquam behind. It is possible to ski to within a few meters of the summit.

- HAZARDS:
- 1) Possible avalanches and falling ice on approach to icefields.
 - 2) The glacier is heavily crevassed.
 - 3) Creeks dangerously high in late spring.

Mamquam Mtn



92G/15

